



Fosroc

Polyurea Solutions

www.fosroc.com



constructive solutions

ABOUT FOSROC INTERNATIONAL

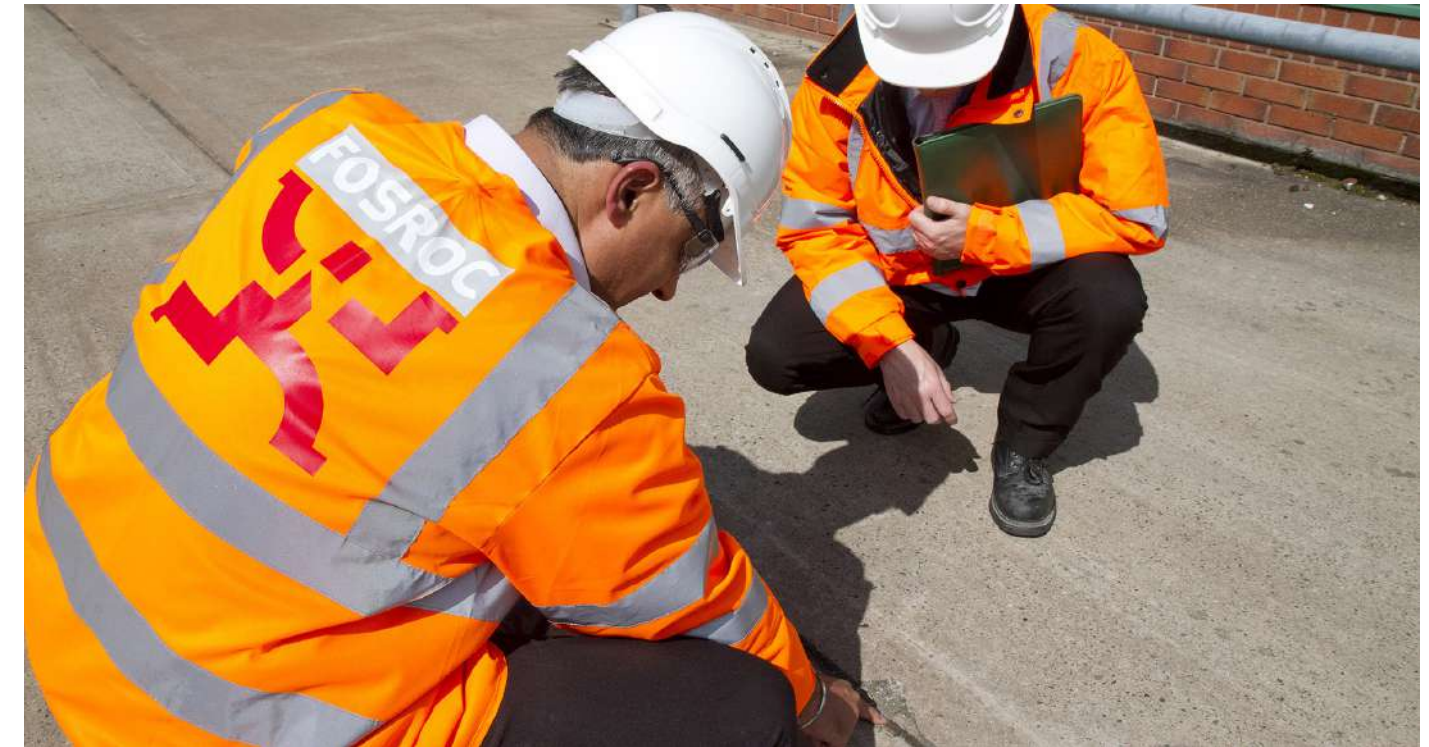
Since the company's beginnings over 80 years ago, Fosroc has developed into an International leader in delivering Constructive Solutions for projects across a broad range of market segments including transport, utilities, industrial and general buildings.

Fosroc's commitment to customer service and technical support is second to none. We work closely with architects, structural engineers, contractors and owners to best understand their requirements. Together we can develop a bespoke solution for a construction project, adding value and becoming more than just a materials supplier, but a solution provider.

Fosroc has an extensive network of offices and manufacturing locations across Europe, the Middle East, India, North, South and East Asia, and is further represented in other regions across the world by distributor and licensee partners.

Selecting from the full portfolio of Fosroc products and services and integrating expert technical support, world class customer service and innovation, Fosroc goes beyond just product selling to ensure that we partner with our customers to deliver complete constructive solutions.

- > Admixtures
- > Adhesives
- > Protective Coatings
- > Concrete Repairs
- > Industrial Flooring
- > Grouts & Anchors
- > Joint Sealants
- > Surface Treatments
- > Grinding Aids



FOSROC DELIVER SOLUTIONS NOT JUST PRODUCTS

CAD Details

A library of standard CAD details are available, bespoke CAD details can be created for your specific project

Project Specifications

Dedicated specification managers on hand to assist with correct system choices and tailored solutions

Site Support

Expert product and application support made available from our specialist teams.

Seminar & Training

Comprehensive programme of seminars and training courses designed to expand and reinforce your knowledge.

Leader in delivering
Constructive Solutions
Worldwide!





FOSROC PROTECT YOUR WHOLE BUILDING ASSET

All the way from below ground to above ground, Fosroc's vast experience in providing constructive solutions to protect many famous building structures around the world has been built on a broad portfolio of products. These include waterproof membranes, waterstops, joint sealants, concrete repair mortars, resin flooring, protective coatings, structural strengthening, grouts and concrete admixtures manufactured to the highest quality standards backed by independent test certificates. The full portfolio of Fosroc solutions can be found on our website.

- > Basements
- > Wet rooms
- > Roofs
- > Podium decks
- > Underground car parks
- > Balconies
- > Façade sealants
- > Garden areas



FOSROC POLYUREA EXPERTISE

Waterproofing membranes are used in most types of buildings - from residential flats, offices, hotels to stadiums, shopping centres and airports. They protect the building structure from harmful ingress of water or chemicals and are critical to the long term durability of the building asset. Waterproof membranes are available in many forms whether in sheets or liquid-applied, Fosroc can supply from their extensive range to meet each specific project.

Fosroc's years of experience in spray-applied Polyurea waterproofing have led to the development of a range of products to offer you the best solution for your application. From the Northern Line extension London Underground to the Galaxy Resort in Macau we have successfully waterproofed many buildings across the world using our Polyurea technology since first introduced over 12 years ago.



FOSROC POLYUREA SOLUTIONS

Rapid return to service

Achieving the balance between assured quality and effective cost plays an important part in product system choice for project applications involving waterproofing, industrial flooring and protective coatings.

One factor that helps lower cost is to reduce the time taken for those product applications that have a direct effect on overall project schedules. The Fosroc Polyurea portfolio addresses this important factor by delivering cost-effective high quality spray applied systems which can achieve rapid return to service times whilst maintaining long term performance.

Innovative Technology
Plural component, 100% solids Polyurea systems which are spray-applied. These systems have been individually formulated to offer the best physical properties, cure times and finishes for typical applications.

Cost-saving Solutions
High performance fast setting Polyurea systems for critical waterproofing, protective coating and flooring applications which can be applied at a wide range of temperatures.

World-class Service
Fosroc offer the most comprehensive range of waterproofing products, manufactured to the highest quality standards backed by ISO 9001 and ISO 14001 accreditation.

Our wealth of experience is available to clients both on and off site through Fosroc's team of technical experts and Specification Managers, helping you find the best total waterproofing solution



Benefits of Fosroc Polyurea technology

- Environment friendly – zero VOC
- Rapid return to service time – back in service within a few hours
- Significantly enhances the durability of reinforced concrete
- Seamless systems
- Designed for service temperatures from -30oC to +135oC
- Excellent chemical resistance, thermal stability and UV resistance
- Excellent impact, abrasion and puncture resistance
- Can be applied on top of sprayed PU foam insulation
- CEN TS14416 root resistance
- UV colour stable
- BS476 pt3 EXT. F. AA fire rating
- WRAS drinking water approved

FOSROC PRODUCT SYSTEMS

Fosroc Polyurea seamless spray-applied systems possess excellent physical properties which make them ideally suited for many waterproofing and industrial flooring applications in a variety of market segments.

When applied in conjunction with Fosroc Nitoproof UVR Topcoat, they form a UV colour stable, fire rated system which gives long term performance especially for flat roof waterproofing.

MARKET SEGMENT APPLICATIONS

- > Car park decks
- > Liquid Containment
- > Clean & dirty water tanks
- > Canals & Water channels
- > Desalination tanks
- > Jetties, piers & wharfs
- > Pontoons & flooring docks
- > Bunds
- > Wind farms
- > Basements
- > Metal deck roofs
- > Concrete roofs
- > Green roofing
- > Food processing flooring
- > Loading bays
- > Heavy duty flooring
- > Grain silos & silage pits
- > Dairy farms



Product	Description
Fosroc Polyurea WH 200	Cost-effective Hybrid Polyurea waterproofing and protective coating spray-applied membrane
Fosroc Polyurea WH 200GR	Hybrid Polyurea waterproofing spray-applied system for Green Roofs
Fosroc Polyurea WPE	Pure Polyurea waterproofing and protective coating spray-applied membrane
Fosroc Polyurea WPW	Pure Polyurea spray-applied system for drinking water applications
Fosroc Polyurea FLM	Pure Polyurea flooring and protective coating spray-applied membrane
Nitoproof UVR Topcoat	UV colour stable and BS476 pt3 EXT.F.AA fire rated liquid-applied waterproofing coating
Nitodek UVR Topcoat	UV colour stable liquid-applied flooring coating



PRODUCT SELECTOR

APPLICATIONS	WH 200GR	WPW	WH 200	WPE	FLM
Podiums			✓	✓	
Roof gardens			✓	✓	
Drinking water tanks		✓			
Cut/Cover tunnels			✓	✓	
Service roofs			✓	✓	
Green roofs	✓			✓	
Stadium stands			✓	✓	
Jetties, piers, wharfs				✓	
Dirty water tanks				✓	
Secondary containment bunds				✓	
Chemical resistance				✓	
High abrasion resistance				✓	✓
Fast cure foot traffic two mins					✓
Car park decks					✓
Heavy duty flooring					✓



TYPICAL APPLICATION EXAMPLES



Seamless Fosroc Polyurea roof waterproofing system.



Complex shapes are easily waterproofed with Fosroc Polyurea



Rapid return to service heavy-duty Fosroc Polyurea FLM



Quick installation of Fosroc Polyurea waterproofing

SERVICE & QUALITY

Running through all our activities Fosroc has a strong commitment to delivering successful constructive solutions.

From basic advice at the project concept stage to bespoke CAD details at design stage, early consultation can assure definition of a complete system-based solution.

Technical advice and site support during the construction phase can help turn that system into a successful reality.

Fosroc product systems are manufactured to the highest quality standards backed by independent test certificates.

Our wealth of experienced technical experts and specification managers will help you find the best system solution for your project.



Mouse Grey



Concrete Grey



Water Blue



Dusty Grey



Yellow Grey



Traffic Yellow



Pale Green



Signal Green

Important note

Actual colour may vary from those shown. Other colours can be manufactured to order at an additional cost, please contact your local Fosroc office for details.

PASSIVHAUS CASE STUDY (AS SEEN ON UK TV "GRAND DESIGNS")

Having obtained planning permission under PPS7 Sustainable Development in Rural Areas which requires that a design should be truly outstanding and ground-breaking, as well as reflecting the highest standards in contemporary architecture, Seymour-Smith Architects approached Fosroc regarding the waterproofing system for what is now the first certified Passivhaus in England – UK.

The design

The architect's vision was to construct an eco house for the future in a very prominent location at the top of a hill in an Area of Outstanding Natural Beauty incorporating an existing barn with the new building being hidden underneath and adjacent, invisible from the surrounding countryside and with absolute minimal visual as well as environmental impact on the landscape. Designed to meet the German Passivhaus standard, developed in 1996 the house relies upon very high levels of insulation, elimination of cold bridges, super-insulated triple glazed windows, orientation to the south to maximise passive solar gain, and an extremely well sealed building fabric. It also has a mechanical ventilation system to provide excellent air quality and highly efficient heat recovery. It is estimated that using the Passivhaus method

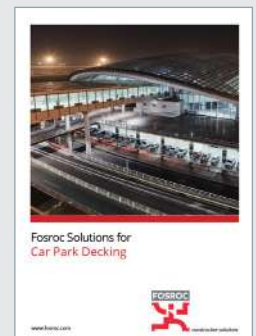
to construct a typical house results in a 90% reduction of carbon emissions compared to that of an average home. By adding renewables, the architects aimed to make the house carbon neutral.

The challenge

The structure of this underground house is entirely concrete, much of which is left exposed internally to exploit the benefits of its thermal mass. It is insulated and waterproofed externally for the same reason. This meant a successful waterproofing solution for the base, walls and below ground roof was key to the project. Fosroc's team of technical experts consulted with the client on suitable methods of waterproofing before proposing a solution using the fully integrated range of Proofex waterproofing membranes and ancillaries: **Fosroc Proofex Engage** under the base, **Fosroc Proofex 3000** and **Fosroc Proofex Sheet Drain 80** on the walls. For the green roof areas **Fosroc Polyurea WPE** spray applied membrane provided the best solution to ensure the structure's waterproof integrity.



Fosroc offers a full range of construction chemical solutions, helping to protect structures throughout the world. Please refer to our brochures, which include:



Details of your local Fosroc office can be found at
www.fosroc.com

Important Note

Fosroc products are guaranteed against defective materials and manufacture and are sold subject to its standard terms and conditions of sale, copies of which may be obtained on request. Whilst Fosroc endeavours to ensure that any advice, recommendation, specification or information it may give is accurate and correct, it cannot, because it has no direct or continuous control over where or how its products are applied, accept any liability either directly or indirectly arising from the use of its products, whether or not in accordance with any advice, specification, recommendation or information given by it.



constructive solutions